



Saturday June 9, 2018

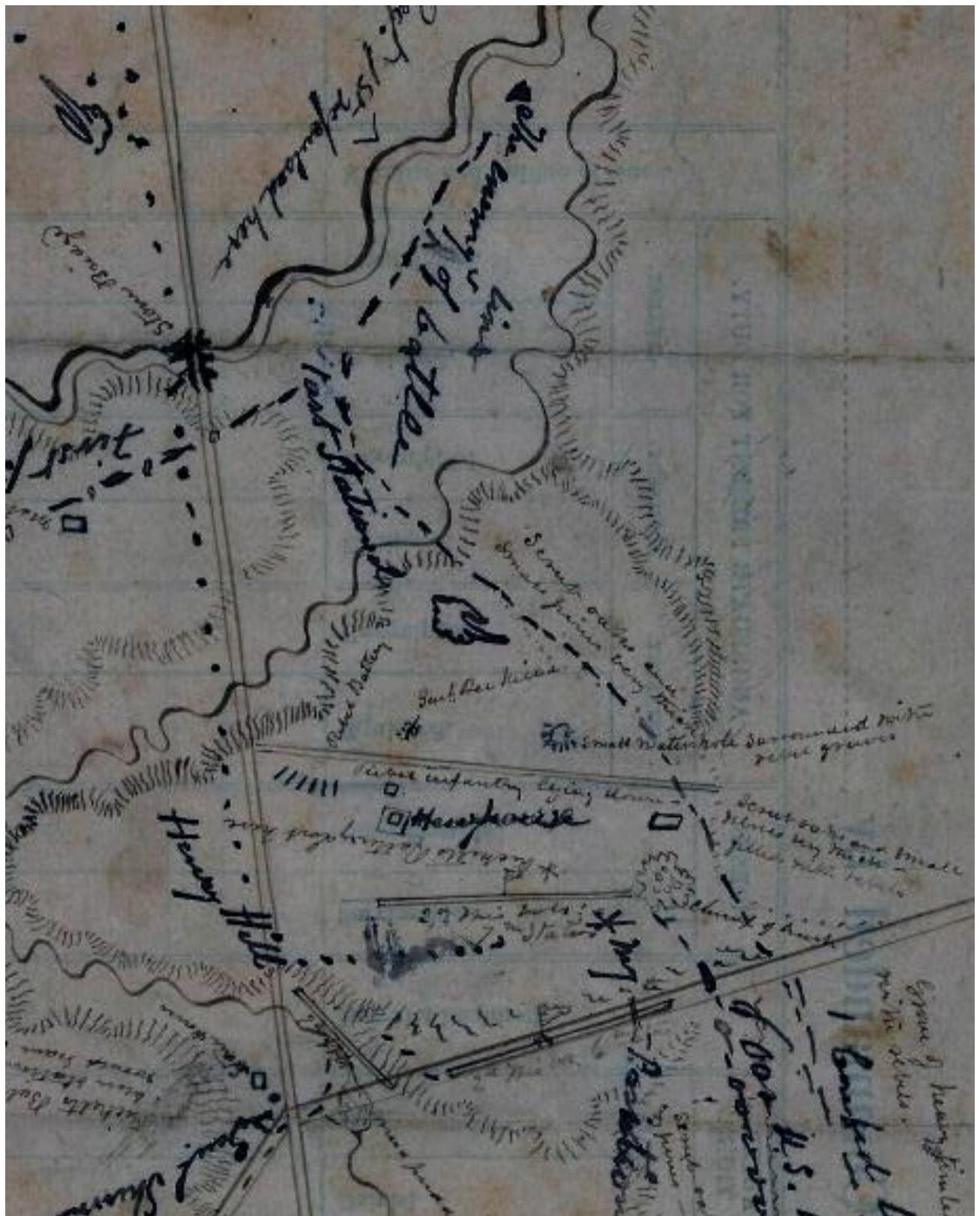
Bull Runnings Photo Tour

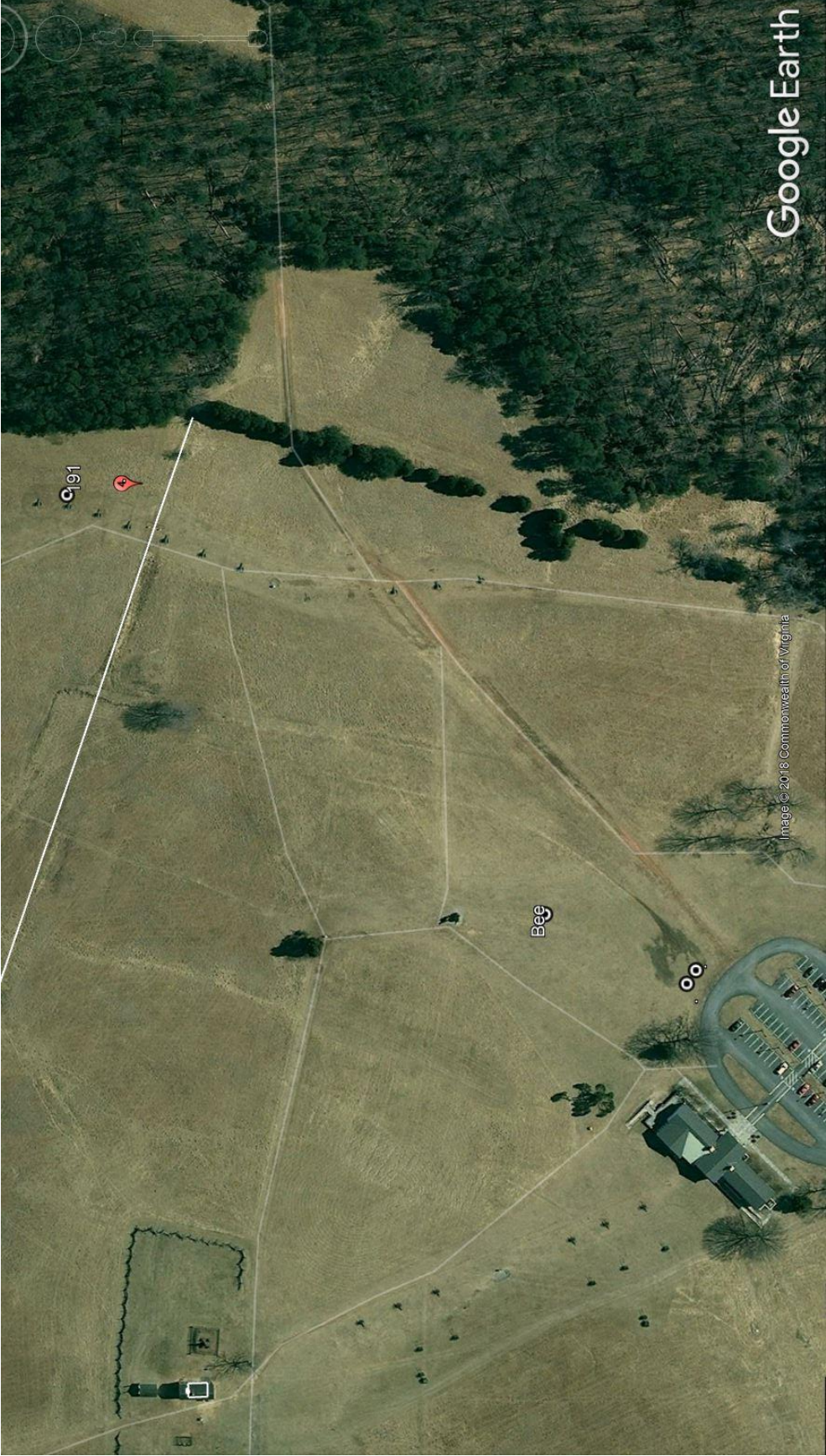
With Guide, John F. Cummings III



11
C
C
C

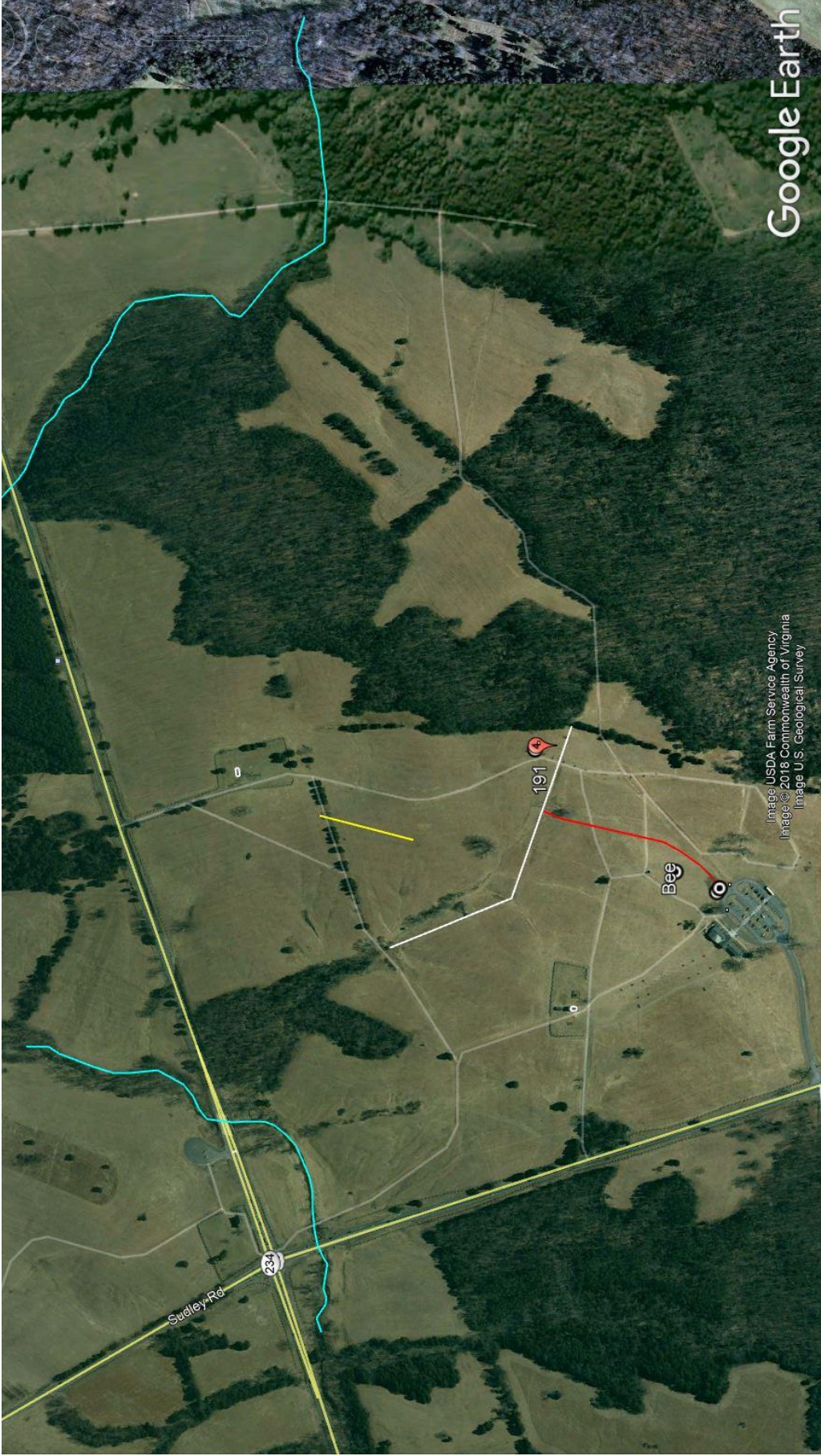
2329





Google Earth

Image © 2018 Commonwealth of Virginia



Google Earth

Image USDA Farm Service Agency
Image © 2018 Commonwealth of Virginia
Image U.S. Geological Survey



1989 4/2011 2016

Navigation and history controls including a timeline slider and a search icon.

0

Map navigation controls including a compass and a scale bar.

Google Earth

Image © 2017 Commonwealth of Virginia

Imagery Date: 1/31/2011 38°48'52.33" N 77°31'08.45" W elev. 267 ft eye alt. 1299 ft





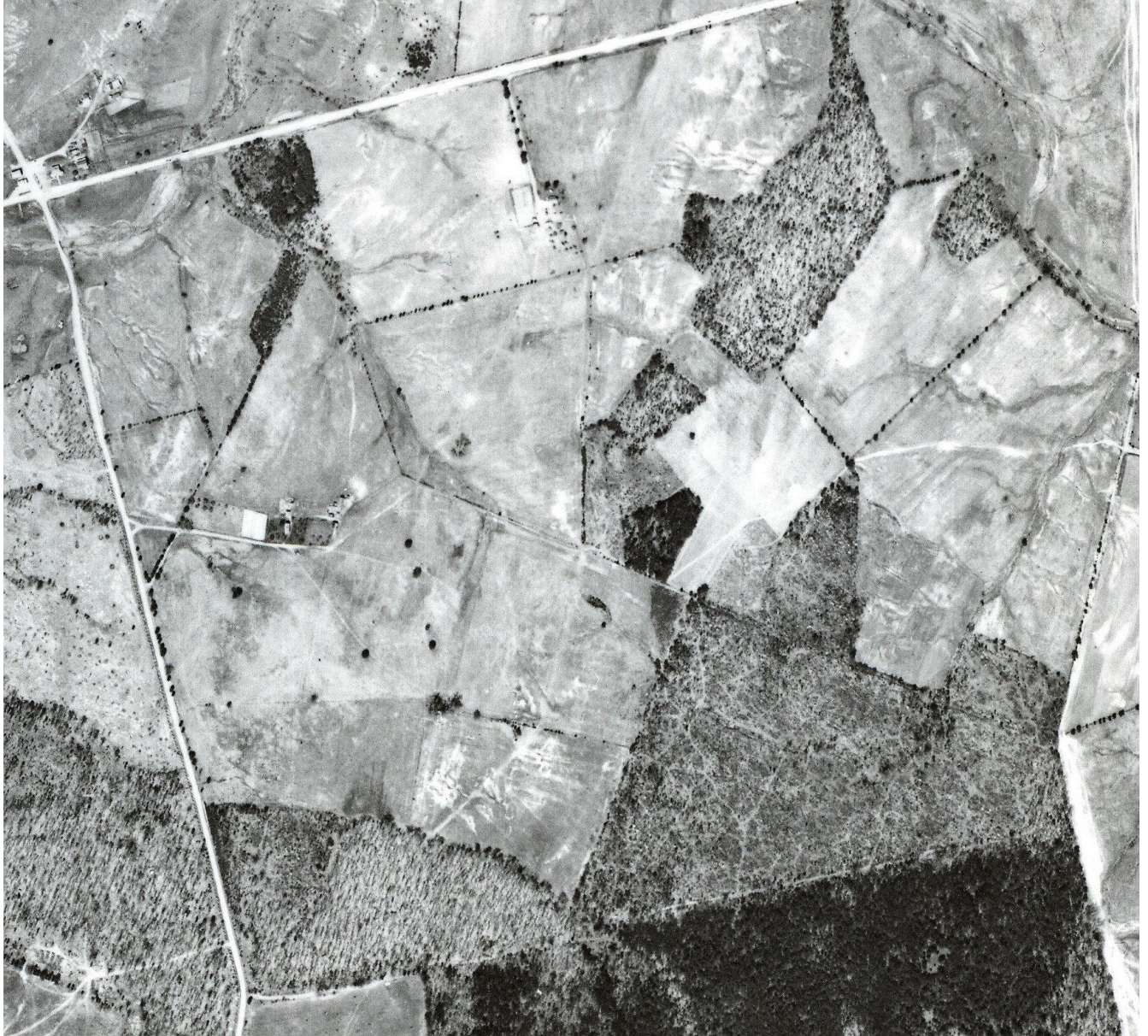
1970





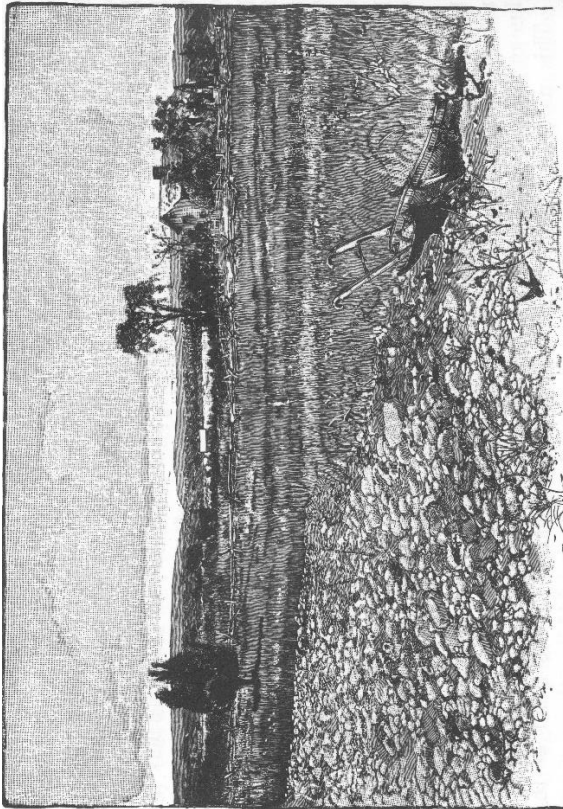
Feb 6, 1942





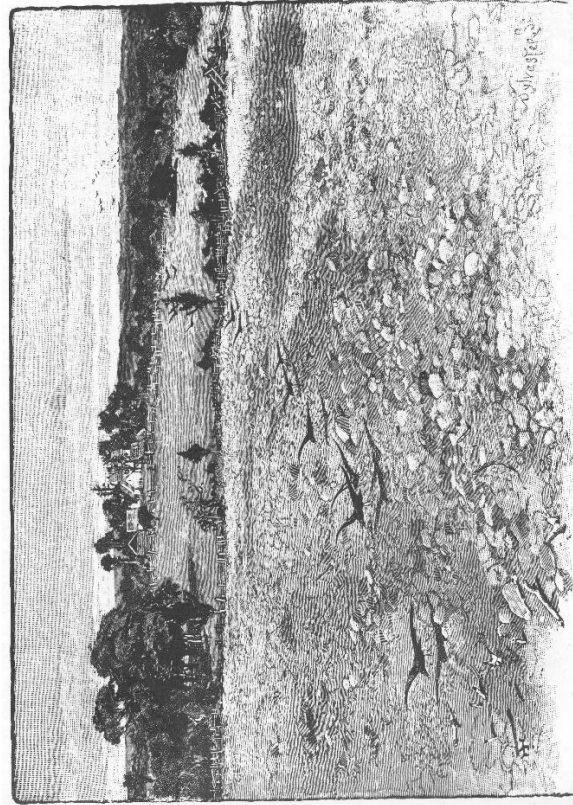
1937





THE MAIN BATTLE-GROUND,—NO. 1.

View of the Eastern Front, looking toward the West, from the position of the British, during the battle of the Marston, 1812.



THE MAIN BATTLE-GROUND,—NO. 2.

View of the Eastern Front, looking toward the West, from the position of the British, during the battle of the Marston, 1812.



Manassas National Battlefield Park
 Page Liked · February 17 ·

Henry Hill ca. 1940

Facing northwest toward the Henry House, this view includes the second Bartow monument on the lefthand side of the image, with a car parked to the left of it. The second Bartow monument was dedicated in 1936 by the Georgia Division, United Daughters of the Confederacy near the site of the original Bartow Monument, missing since 1862.

Like Comment Share

120 Top Comments

5 shares 3 Comments

John Cummings That's the Bee monument at left, isn't it? The Bartow monument would be all the way to the right, perhaps on the down slope by the tree, but not visible.
 Like Reply · February 28 at 7:15am

John Cummings And the old Jackson cedar tree is at center.
 Like Reply · February 28 at 7:16am

Kate Danu Like Reply · 1 · February 18 at 12:51am

Write a comment...

Suggested Pages See All

Cherry's Totes and Bags
 27 people like this.
 Like



MANASSAS BATTLE FIELD SCENE, VIRGINIA.—(228)

Manassas Battle Field



We have the honor on the behalf of the Bernard E. Bee Chapter U.D.C. of San Antonio Texas, to place the flag of the Lone Star State in the memory of the gallant "Bee" who fell in the 1st Battle of Manassas, after famous charge that linked him to Stonewall.













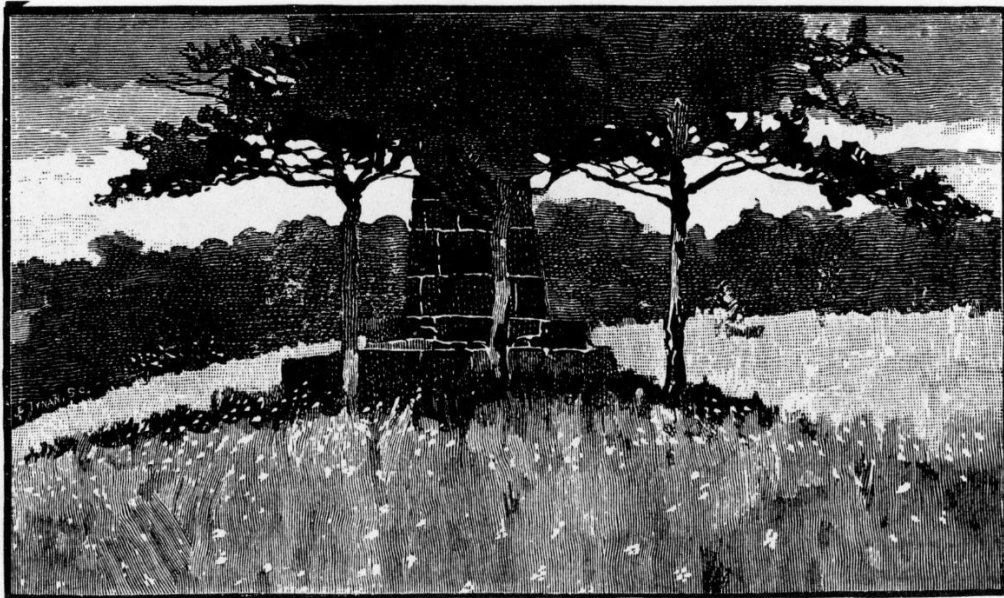




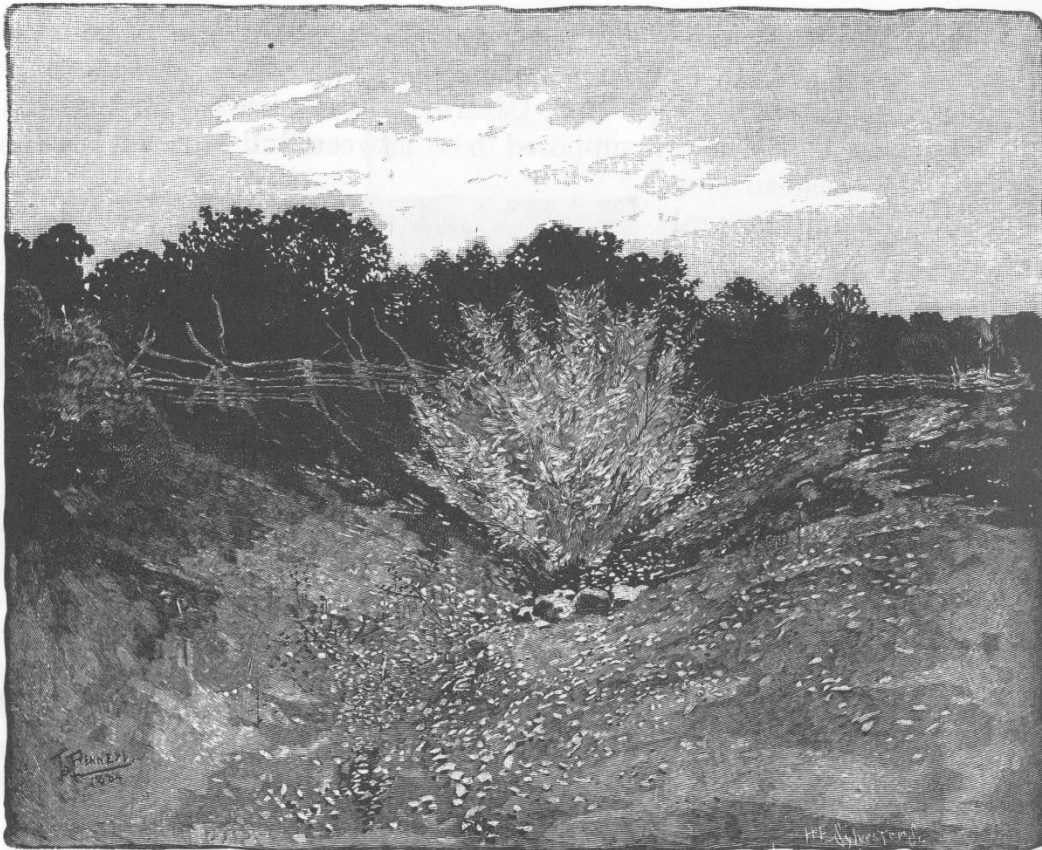


Copyright 2011 by John F. Cummings III





THE UNION MONUMENT NEAR THE "DEEP CUT."
FROM A SKETCH MADE IN 1884. (SEE MAPS, PP. 473, 509.)



THE "DEEP CUT." FROM A SKETCH MADE IN 1884.

